

What do I need?

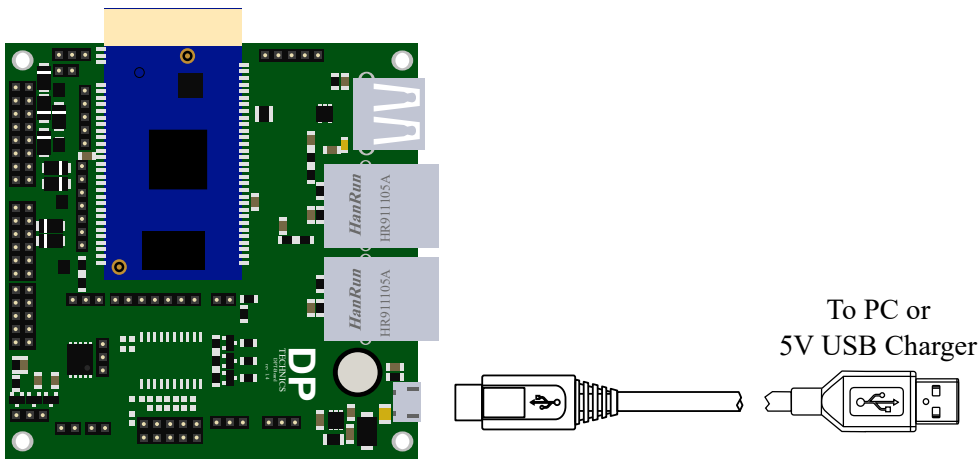
So your brand spanking new DPT-Board has just arrived and you're eager to start play with it? Than this little guide helps you getting started. You will need the following items to start:

- A DPT-Board (off course)
- A micro-USB cable
- 1 ethernet cable
- Your WiFi enabled computer/tablet

That's it, nothing more is needed to complete this guide.

First boot

To power-up and boot your DPT-Board for the first time, connect the micro-USB cable to the power connector of the board and a computer or 5V USB charger.



The green status LED on the board will now run through 3 phases:

1. Steady on: the U-Boot bootloader is initialising the board.
2. Blinking on/off: Linux is loading and running init.d
3. Steady on: the board is completely booted and ready for you to use.

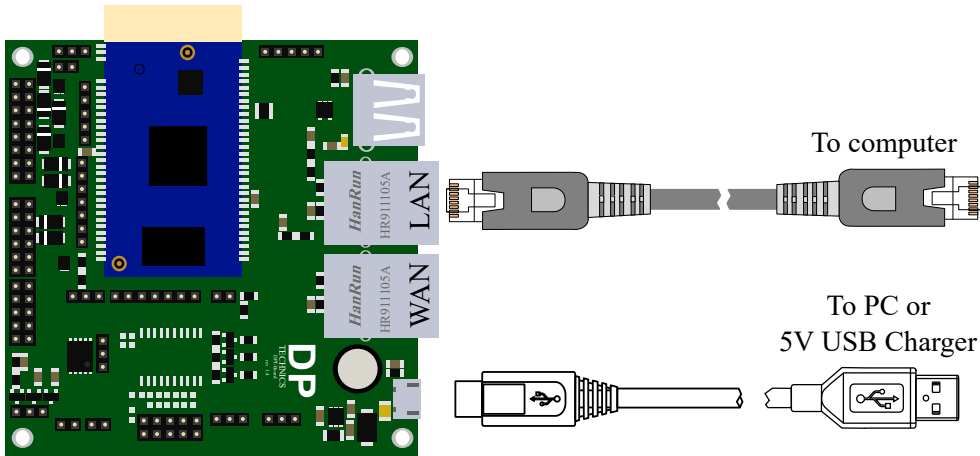
Connecting to the board

Via WiFi

By default the board is setup to transmit it's own WiFi network called **DPT-Module** which is not password protected. You can now connect to this wireless network. Upon successful connection your computer should have an AP address assigned by the board.

Via ethernet

The board has two ethernet connectors. By default 1 connector is **WAN** and the other is **LAN**. To make a successful connection to the board you must connect an ethernet cable between the LAN port and your computer's ethernet port.



It is perfectly normal that the DPT-Board ethernet connector LEDs will not turn on. We have opted to give the user more available GPIO pins instead of using 4 GPIOs to drive the ethernet connector LEDs. The connection is successful when your computer gets an IP address assigned by the DPT-Board.

Going to the web interface

If the connection is successful you can access the web interface by opening up your favorite webbrowser and surfing to **192.168.61.1**, this is the DPT-Board's default IP-address (for old firmware versions this is **192.168.1.1**). If the connection to the DPT-board was successful you should see the following interface appear:

